

S09 精明控制系统 S09 Smart Control System

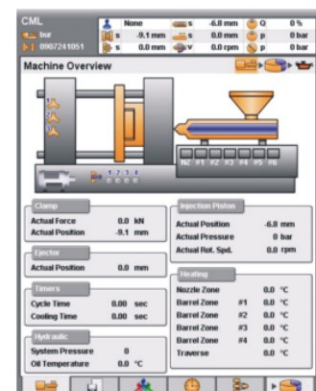
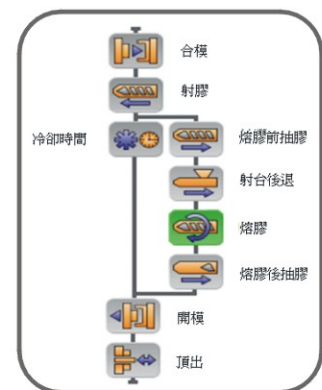
软件及功能:

- 图形化编写程序, 清楚明白
- 客户可自由编程辅助输出
- 警报记录, 使用者可查核曾发生的故障
- 参数更改记录, 客户可从记录中知道谁人曾更改参数及参数改变的数值
- 品质管理统计参数记录, 确认机器的稳定性
- 自动调节温度 PID 参数
- 模具参数可记录于 U 盘处, 并抄录到其它机台中使用
- 使用 MODEM 或以太网遥距监控机台参数及程序
- 在线操作说明文件
- 多种语言文字显示



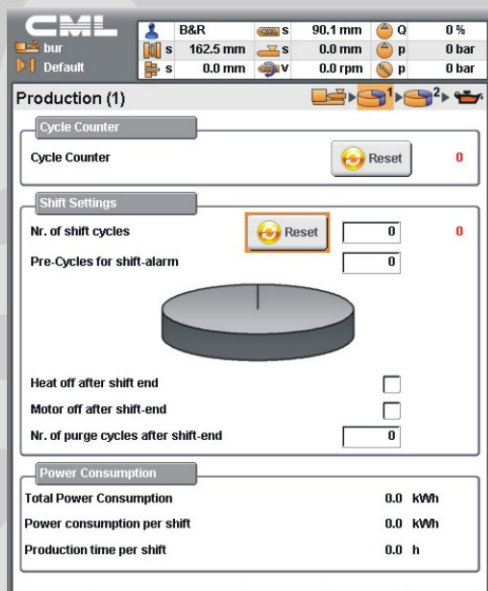
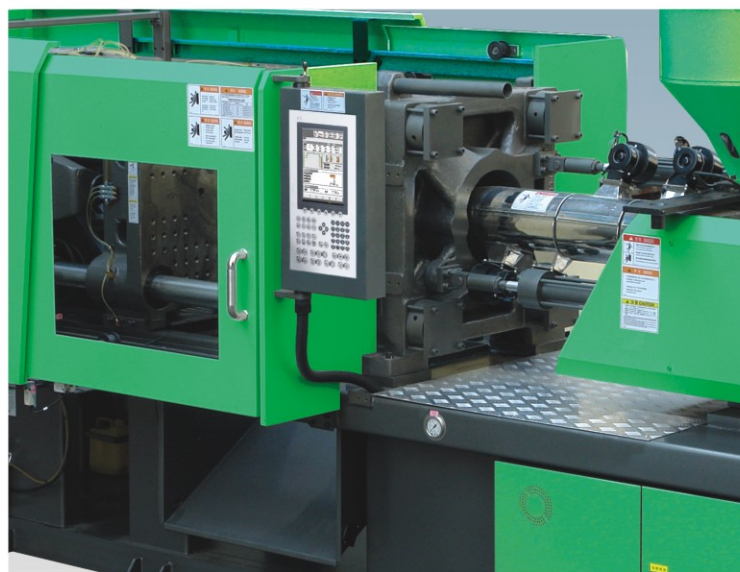
Software & Functions:

- Program sequence by codes or diagram, clear and easy to understand
- Free output programmed by user
- Alarm history, user can check alarms happened before
- Parameter change logging, user can know who change the data and the scope of data changed
- Quality control statistical process data, proves the stability of machine
- Auto-tune temperature control PID value
- Mould data can save on USB memory and copy to another injection machine
- Utilize MODEM or Ethernet to remote monitor the moulding data and sequence
- On-line help manual display
- Multi-languages text display



硬 件

- 欧洲进口贝加莱自动化公司, 专业注塑机控制系统
- 10.4" TFT 彩色液晶显示屏
- 防水轻触按键
- 44 点数字输入
- 48 点数字输出
- 6 点继电器输出
- 4 路14位元模拟输入
- 2 路12 位元模拟输入
- 4 路12 位元模拟输出
- 2 路脉宽调制输出, 直接驱动比例阀
- 8 路热电偶输入
- 2 路计数器输入
- 可扩充 X20 模块
- 高速压力及流量程序扫描时间 < 2ms
- 画面切换时间 < 100ms
- 紧凑设计输出及输入电子板
- 内置 MODEM
- 应用, 工艺参数及机器参数储存在 CF 卡



全塑机行业首创直观式制品批次的相应加工能耗
Leading edge application on plastic industry with
on-screen display "power consumption per shift"

Hardware

- European imported from B&R Automation, professional control system for injection moulding machine
- 10.4" TFT colour LCD display
- Waterproof membrane keyboard
- 44 points digital inputs
- 48 points digital outputs
- 6 points relay outputs
- 4 channels 14 bit analog input
- 2 channels 12 bit analog input
- 4 channels 12 bit analog output
- 2 channels PWM output directly drive proportional valve
- 8 channels thermocouple input
- 2 channels event counters
- Expandable by X20 modules
- High-speed pressure and flow scan time < 2ms
- Page switch time < 100ms
- Compact I/O board
- Build-in MODEM
- Application, recipe and configurations stored on Compact Flash



大同机械有限公司
COSMOS MACHINERY LTD.

(大同机械企业有限公司成员 Member of Cosmos Machinery Enterprises Ltd.)

地址: 广东省东莞市建设路15号

Address: 15, Jianshe Rd, Dongguan, Guangdong, China.

Tel: +86-769-22417755 22806222

Fax: +86-769-22415786

www.cml.com.cn

E-mail: info@cml.com.cn